



# White paper

## STYLISTIC Q550 Windows 7 User Experience Optimization

Enhance the Windows 7 Tablet experience

### Contents

---

STYLISTIC Q550 Baseline

---

Windows 7 Touch Optimizations

---

Windows 7 OS Optimizations

---

## STYLISTIC Q550 Baseline

---

Optimization recommendations assume the latest driver updates applied to a clean system image.

System Image should be free of unnecessary applications and add-ons to ensure optimal user experience.

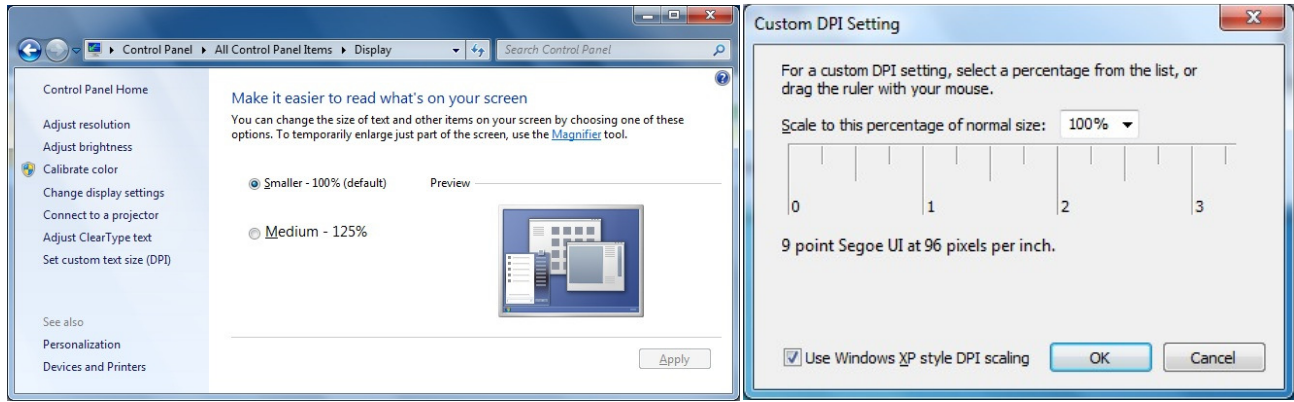
# Windows 7 Touch Optimizations

## Display/DPI Setting and Magnification

For ease of selecting items on the screen, enlarge appearance of objects.

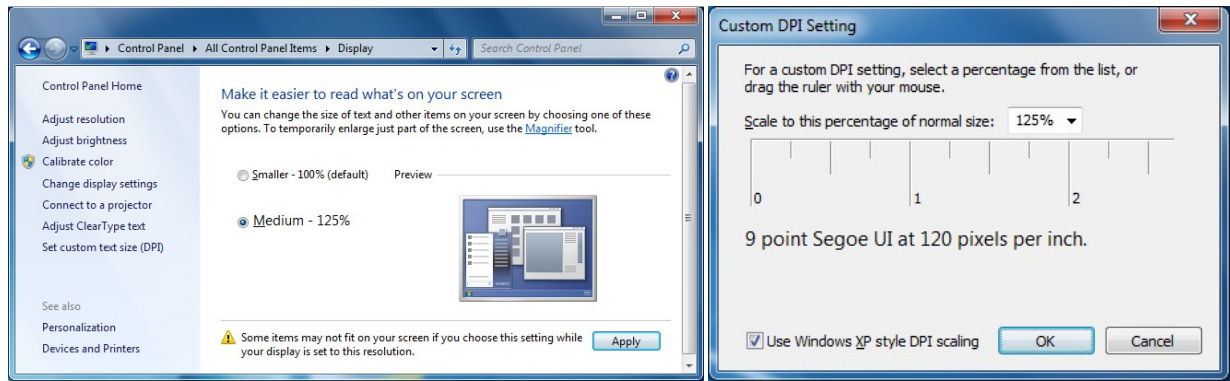
### Increase DPI to magnify all objects on the screen.

The Windows 7 Display setting default is “Smaller- 100%” which equates to 96 DPI.



Select “Medium -125%” which equates to 120 DPI.

Control Panel -> All Control Panel Items -> Display -> “Medium - 125%”



### Important Note(s):

The STYLITSIC Q550 North American preinstall image default is “Medium -125%” - 120 DPI.

Modifying the DPI can affect compatibility of certain custom software applications. When changing DPI ensure changes do not affect custom software applications.

### Enable Microsoft Magnifier by default

Use Windows 7 Magnifier to allow users to zoom in /zoom out when navigating.

Control Panel-> All Control Panel Items -> Ease of Access Center-> Start Magnifier

To easily access the magnifier (similar to how Tablet PC Input panel floats); consider pinning the Magnifier setting box to the taskbar.

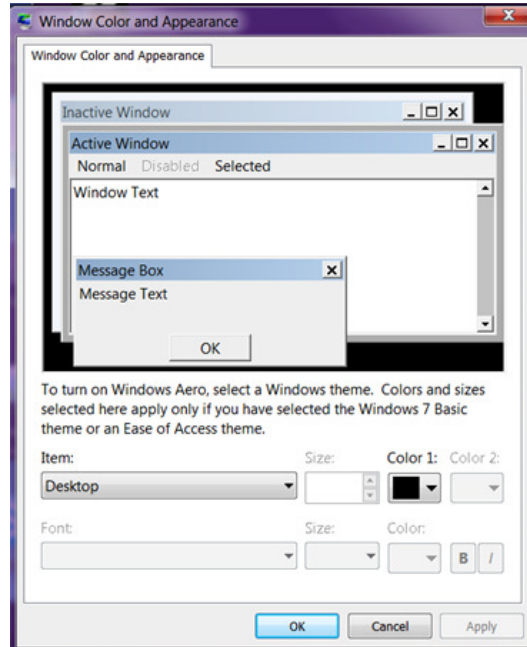
When the program is already running, right-click the program's button on the taskbar to open the program's Jump List, and then click **Pin this program to taskbar**.

## Enlarge caption buttons and scroll bar

The minimize, restore down, and close buttons are small and close together making it difficult to select when using touch only navigation. Additionally, the default scroll bar size is not optimal for touch only navigation.

### Increase the size of these Buttons and Scrollbar

Control Panel -> All Control Panel Items-> Personalization->  
Window Color -> Window Color and Appearance -> Item

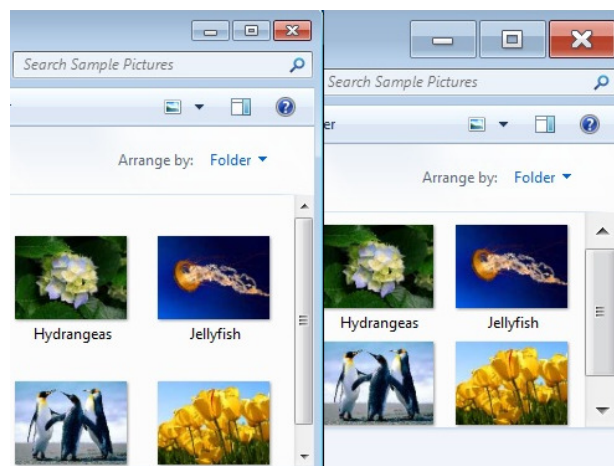


Item -> select [Caption Buttons]

EX: Change size to 35 or other user preferred value for larger button size.

Item -> select [Scrollbar]

EX: Change size to 28 or other user preferred value for a wider scrollbar.



Default (L) VS Example (R) Settings

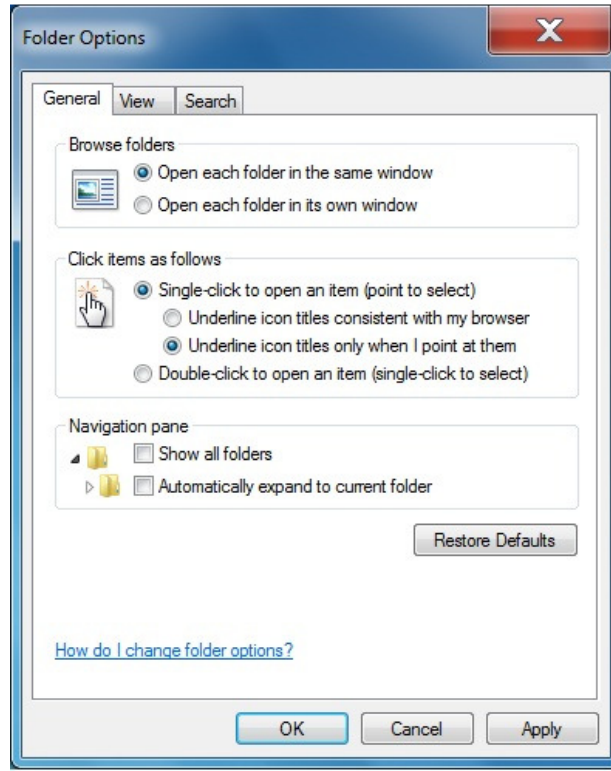
Important Note:

These setting modifications best made after adjusting DPI.

## Switch from Double-Click (default) to Single-Click to open items

By using single click, the user experience will be similar to competitor's tablets/slates. In addition, improves perception of quicker program/application access/launch with single click.

Windows Explorer -> Organize -> Folder and search options -> General



### Important Note:

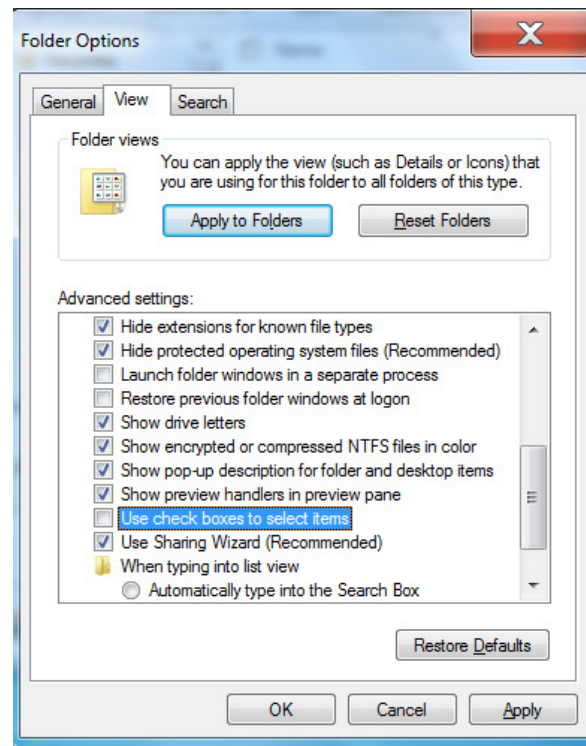
Recommend users carefully evaluate this setting prior to mass adoption.

## Enable User check boxes for selecting files/directories in Windows Explorer

It is common for users to use Ctrl key to select multiple files in a directory that are not in consecutive order. In touch only systems, this may be difficult to do without easy access to the Ctrl key.

A setting in Folder Options “Use check boxes to select items” can be enabled such that a checkbox will appear next to each file in a directory so that user can easily select the files needed.

Windows Explorer -> Folder and search options -> View -> Check “Use check boxes to select items”



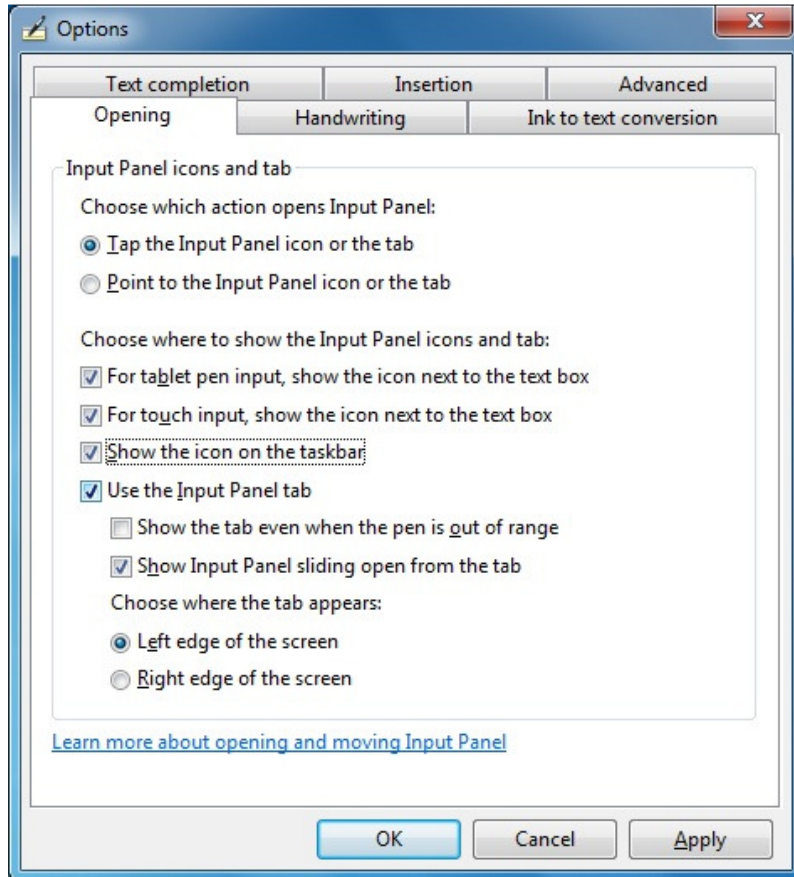
Important Note:

Recommend that the **Double-Click** and **User check boxes** Optimizations be applied together.

## Tablet Input Panel (TIP)

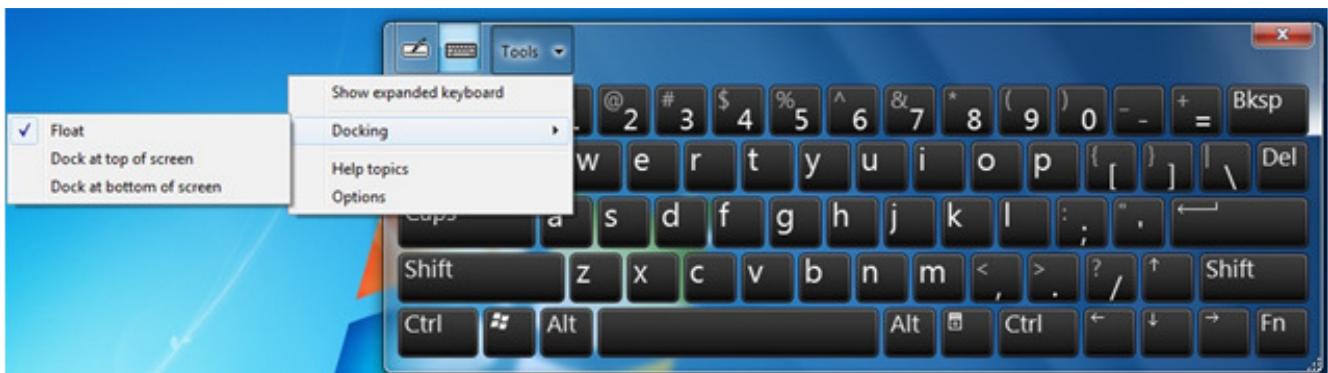
The TIP default is to float and can be difficult to launch from the side of screen. Configure the TIP to show on the taskbar, so the user can easily launch in a touch environment.

TIP -> Tools -> Options -> Opening -> Check "Show the icon in the taskbar"



There are a few other options on configuring TIP. When considering which option to use, factor in the form factor. The TIP configuration can be float, docked at the top, or bottom of the screen. For smaller PCs, docking the TIP will mean losing screen space.

TIP -> Tools -> Docking -> (Float, Dock at top of screen, Dock at bottom of screen)

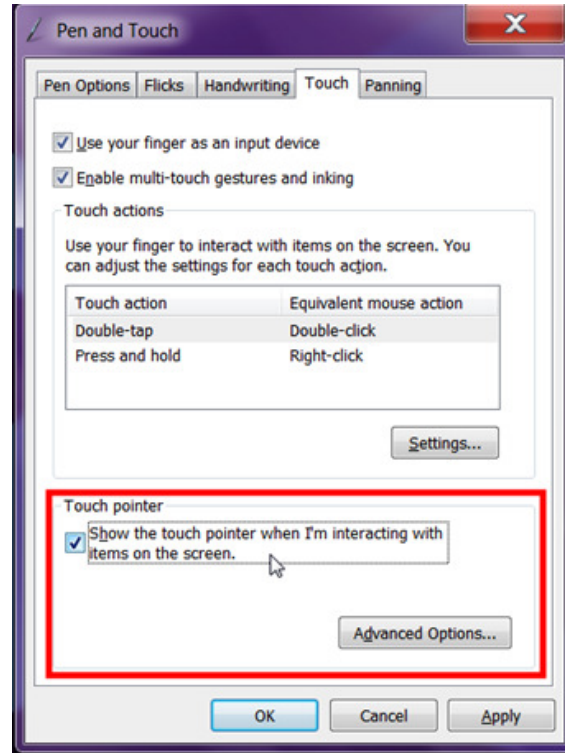


## Show touch pointer during screen interaction (translucent mouse)

Enable touch point (translucent mouse) during screen interaction. This will make right clicking easier.

**Caveat:** Having the translucent mouse appear every time using pointer may not be appealing for some users so review this setting carefully.

Control Panel -> All Control Panel Items -> Pen and Touch -> Touch -> Check "Show the touch pointer..."

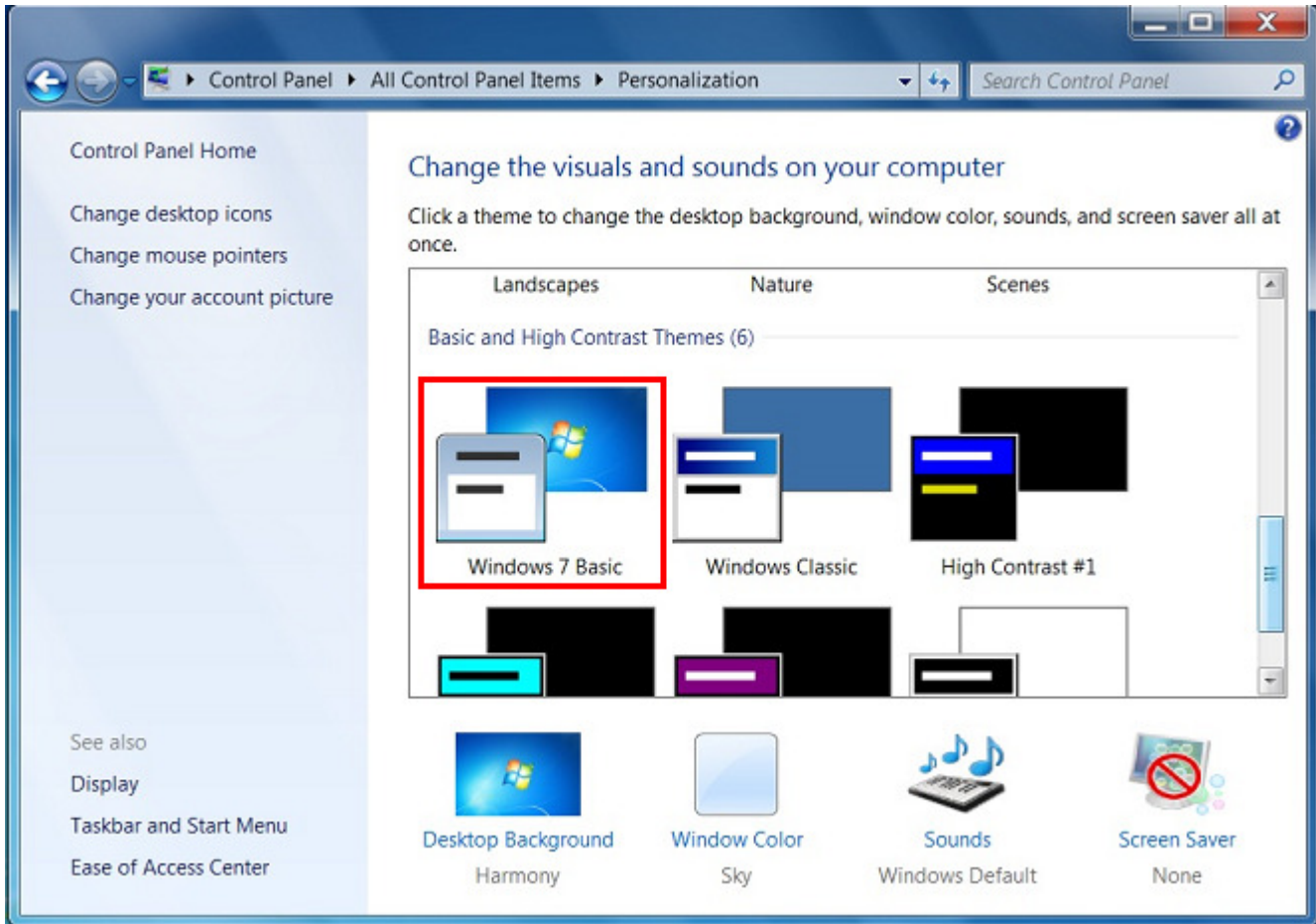


# Windows 7 OS Optimizations

## Windows 7 Theme

Disable the standard Windows 7 Aero theme for increased performance and responsiveness.

Control Panel -> All Control Panel Items -> Personalization-> Windows 7 Basic



## Disable unnecessary visual effects

In addition to changing the Windows 7 theme, tailor the Windows operating system visual effects to improve performance.

Control Panel -> All Control Panel Items -> System -> Advanced system settings ->

System Properties -> Advanced -> Performance -> Settings

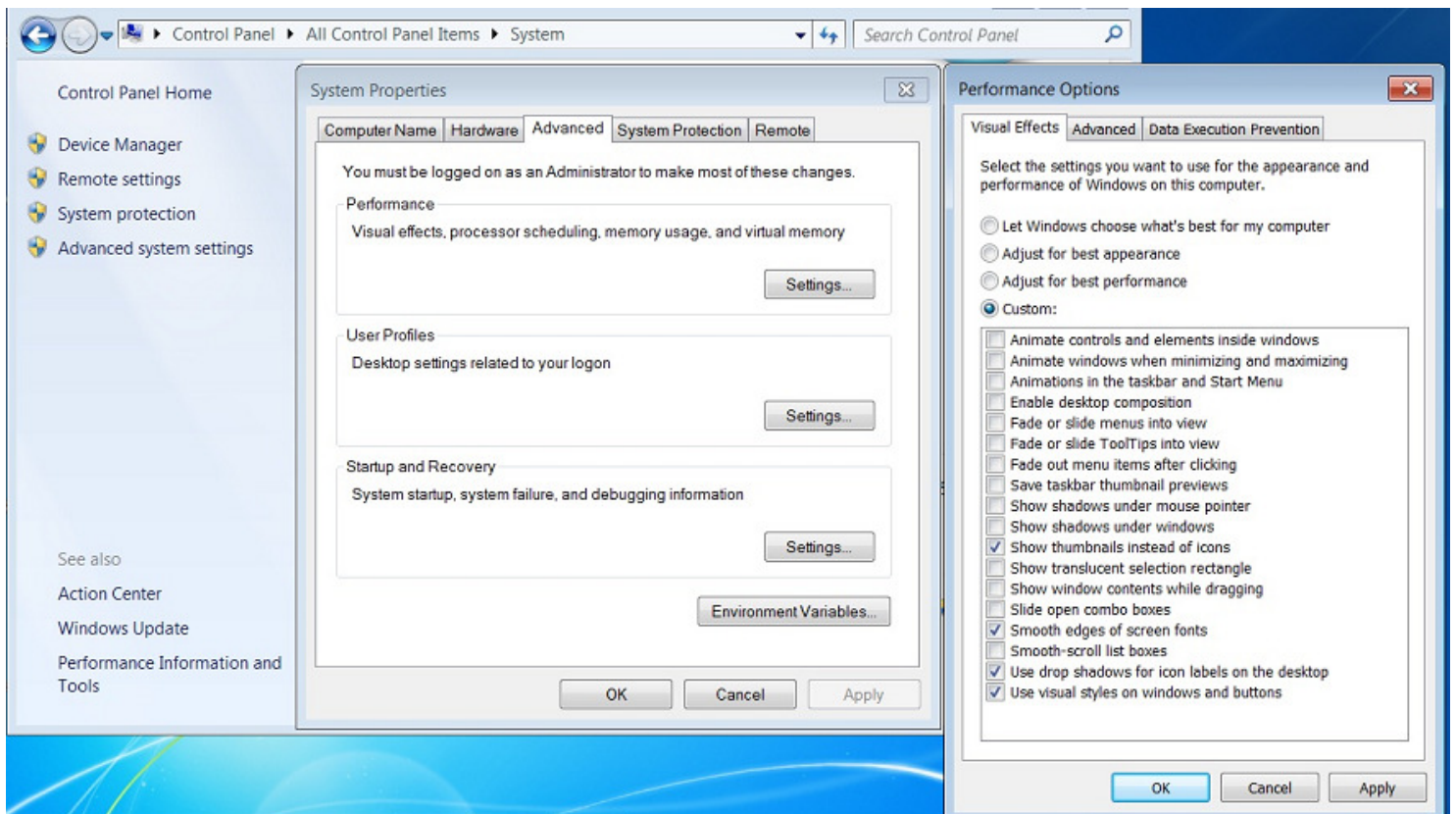
Visual Effects -> select "Custom" and disable all effects and enable only the following:

- Show thumbnails instead of icons

- Smooth edges of screen fonts

- Use drop shadows for icon labels on the desktop

- Use visual styles on windows and buttons



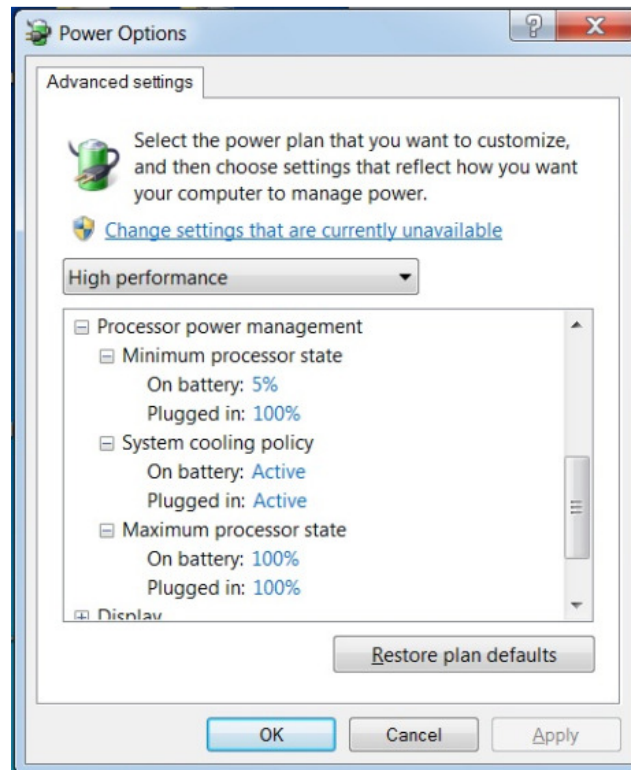
## Windows 7 Power Profile

The Fujitsu America Image Power Profile is Power saver to offer longer battery life. The system performance can increase at the expense of battery life.

Windows 7 offers Power saver, Balanced and High performance. Each Power Profile controls the CPU performance / frequency (and commensurate power usage) based upon the system computing needs and power operations (battery or AC adapter).

The standard Windows 7 High performance Power Profile will allow the CPU to remain at 100% when on AC Adapter and throttle between 5% and 100% when on battery.

Control Panel -> All Control Panel Items -> Power Options -> Show Additional Plans -> High performance



### Important Note:

The selection of High Performance or Balanced Power Profiles can reduce battery life and recommend users carefully evaluate this setting prior to mass adoption.

#### DISCLAIMER

© 2011 Fujitsu America, Inc. All rights reserved. The information in this document is subject to change without notice.

**Fujitsu America makes no warranty of any kind with regard to this material, including, but not limited to, the implied warranties of merchantability and fitness for a particular purpose.**

**Fujitsu America shall not be liable for errors contained herein, or for incidental or consequential damages in connection with the furnishing, performance, or use of this material.**

No part of this document may be reproduced, photocopied, transcribed into a different medium or format, or translated to another language without the prior written consent of Fujitsu America.