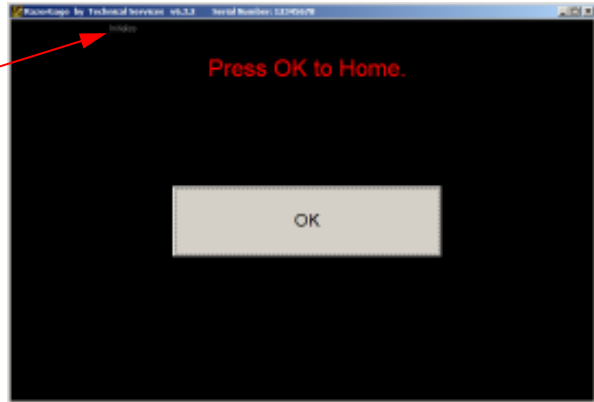


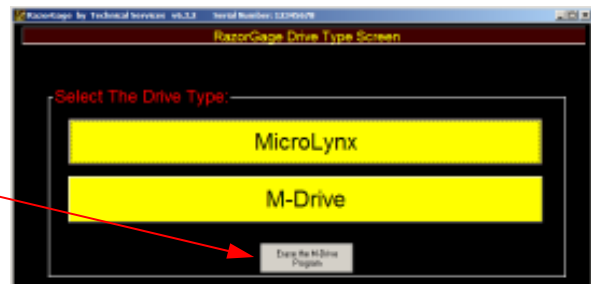
## Instructions for updating the program in an MDrive RazorGage

First go to the SETUP screen in your RazorGage and write down the Offset value, the Scale Factor, Stroke, and Direction. Next close the RazorGage software, go to My Computer, and delete the folder C:\Program Files\RazorGage. Once that's done you can install the new software by inserting the jump drive in one of the USB ports on the RazorGage PC and double clicking setup.exe. If you're using a shortcut on the desktop to start the RazorGage software delete it and create a new one. Sthe old shortcut will start up the deleted software from the Recycle Bin. When you start up the new RazorGage software DON'T CLICK OK TO HOME! Instead click the little INITIALIZE button in the upper left quadrant of the HOME screen as shown below.

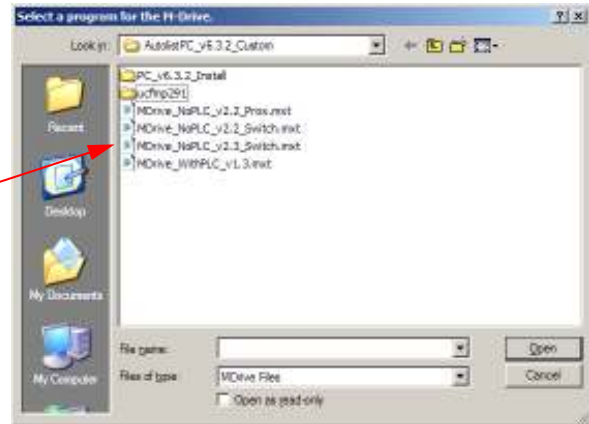
Press the "Initialize" button located here.



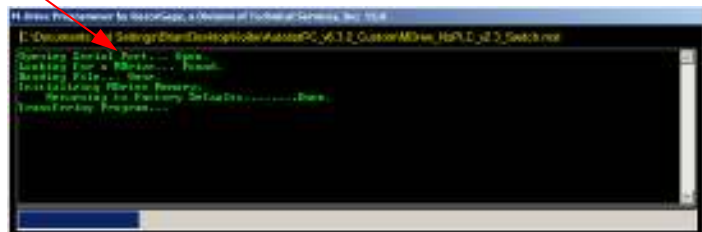
Press the "Erase the M-Drive Program" button.



Select the appropriate MDrive Program and click Open. MDrive\_NoPLC\_vx.x is typical for standard RazorGages. MDrive\_WithPLC\_vx.xx is typically only used on RazorOptimal systems.



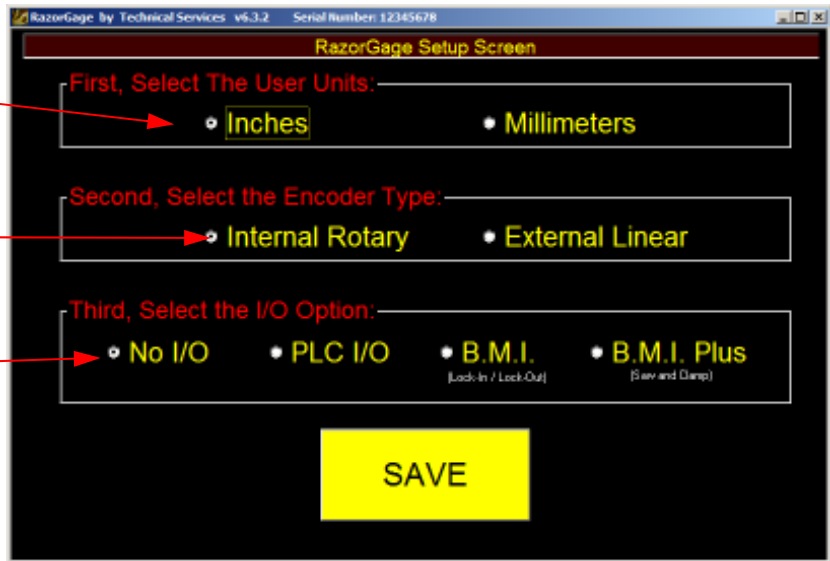
You should see this screen during download.



Choose Units

Choose Encoder Type

\* For Standard RazorGages chose No I/O  
\* For RazorOptimals chose PLC I/O  
\* If you have a RazorGage with BMI option chose BMI.  
\* If you have a RazorGage with the BMI Plus Option (Automated Clamping) chose BMI Plus.



Enter the stroke, units, and Home Left or Home Right based on the numbers you wrote down at the beginning of the process. When you're done press SAVE ALL.

