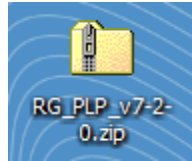


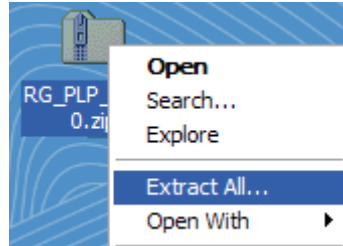
PLP Software Installation Procedure

The Parts List Processor Software will allow the user to map a .csv output file from design software or an Excel spread sheet. The mapping process is only required to be set up one time. After the mapping is done, the PLP program requires only that the new cutlist file be located and with a single button click, a RazorGage data file will be created.

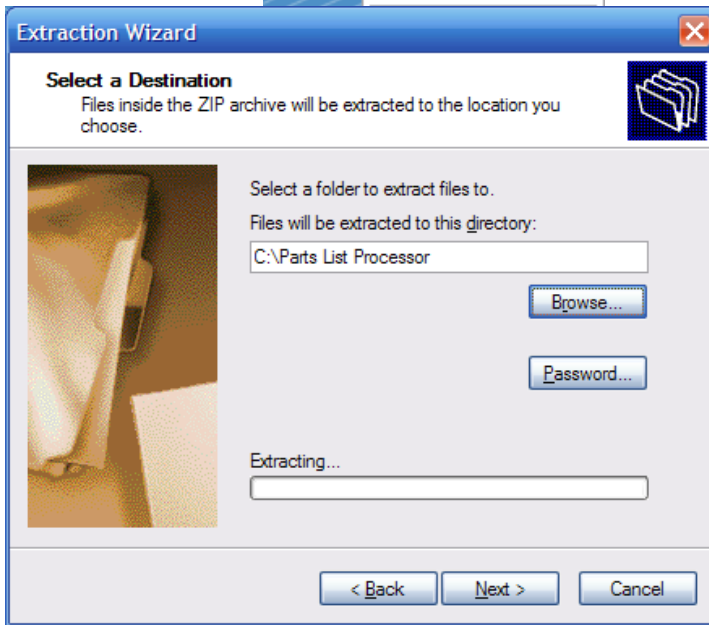
Download the [PLP Software](#) from the [RazorGage website](#). Save the folder on your desktop. It will be a zipped folder and should look like this: (note the zipper on the folder).



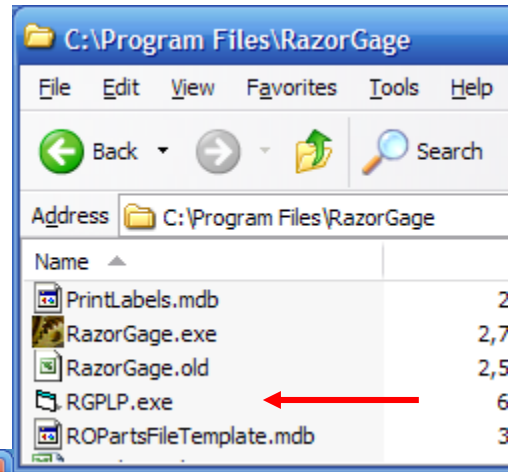
Next, you need to “un-zip” the folder. Right click on the zipped folder and one of your choices should be “extract all”. That will bring up the Extraction Wizard.



Click on the “Browse” button. Locate your (C:) drive under “My Computer”. Click on the “Make New Folder” button. Name the New Folder “Parts List Processor”. Click “OK” and then “Next”.

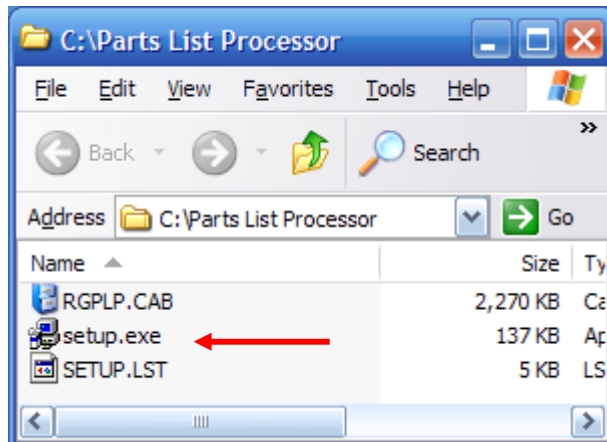


Finally, follow the step-by-step instructions to create the PLP program in your Program Files folder:



Double click on the RGPLP.exe file and the PLP program should open for you!

Now locate the file called “Setup.exe” in the new folder just created and double click it:



PLP Software Installation Procedure