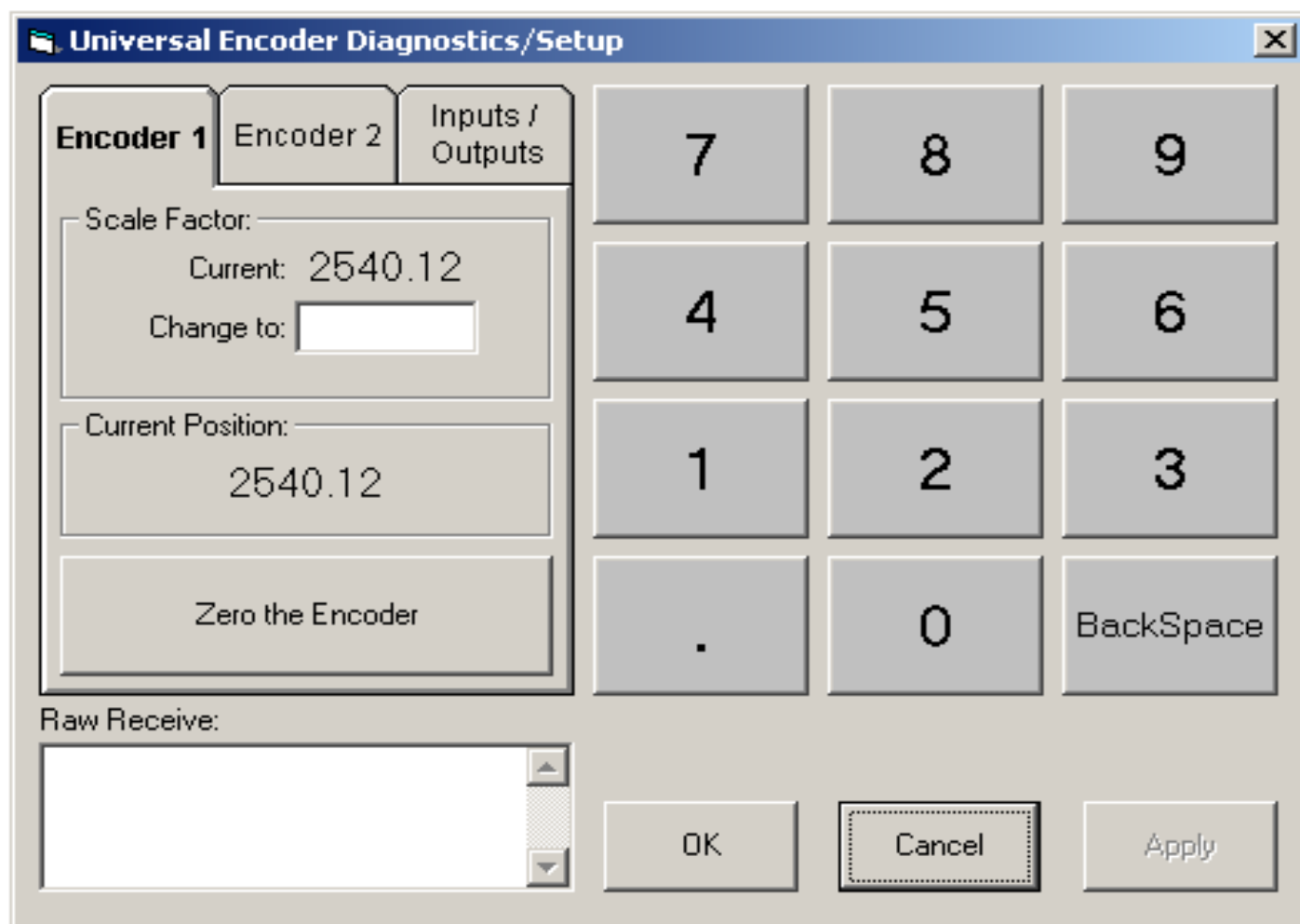


Caliper Table Operation

On power up, the Display will read “MUST ZERO”. To ‘Zero’ the caliper table, press the red button on the back of the gray box for at least 1 second. To change between Standard and Metric Mode, pull the trigger and hold, then press the zero button. If done in this order, the caliper will not zero and the display will change immediately. The Scale factor may be changed by using the Caliper Table software. Plug a serial cable into Com2 of a computer, and the other end into the caliper table. Install and run the software. To change the com port used, open the file named ‘settings.ini’ in the installation folder and edit the comport number.



Caliper Table Recommended Spare Parts

Caliper Table Digital
Readout Assembly
#RGX00467
\$877.50



Caliper Table Encoder
Card Module
#RGX00468
\$956.25

