

# RAZORGAGE

POSITIONERS • SOFTWARE • SYSTEMS



RazorGage ST shown with optional roller conveyor table with two legs.

Better Hardware  
Better Software  
Better Buy RazorGage

Proudly Made in Ames, Iowa, U.S.A.

[www.razorgage.com](http://www.razorgage.com)



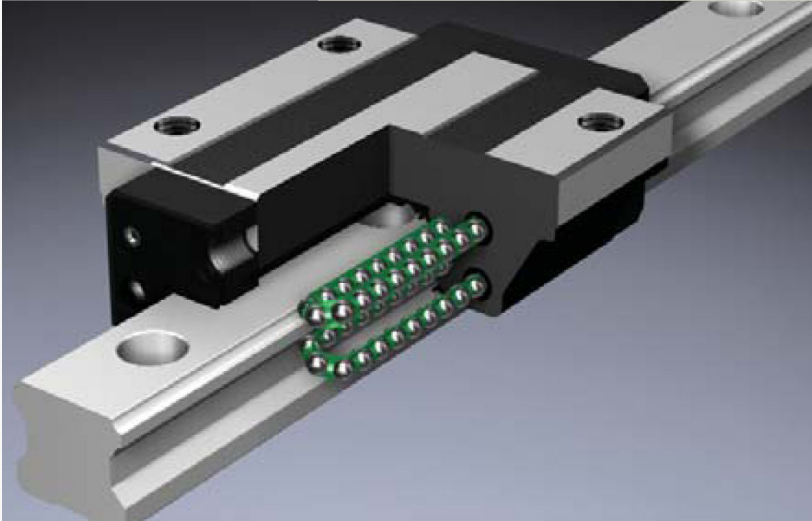
# Better Hardware

**The RazorGage Premise:** A programmable saw stop only benefits your business if you can trust it to position accurately every day.

**Fact:** Since most saw stops calculate stop position based on motor rotation, drive component precision is crucial to long term accuracy.

**Conclusion:** Drive component quality directly affects return on investment.

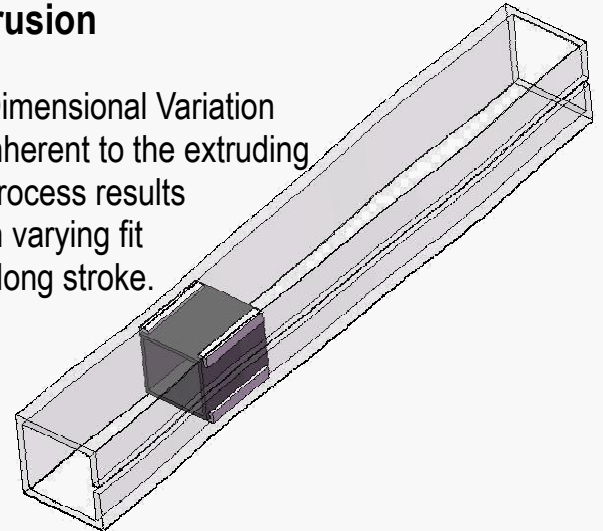
## RazorGage Linear Bearing: THK Linear Guide



- ◆ Industrial Standard for Linear Motion
- ◆ Rigid & Consistent Motion for repeatable and accurate positioning throughout stroke.
- ◆ No Adjustment
- ◆ Long Life

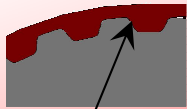
## Competitors' Linear Bearing: Plastic Wear Pads on Aluminum Extrusion

Dimensional Variation inherent to the extruding process results in varying fit along stroke.



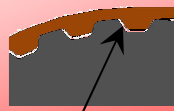
- ◆ Adjustment required as pads wear
- ◆ Motion resistance varies throughout stroke causing unpredictable positioning characteristics.

## RazorGage Zero-Clearance Pulley



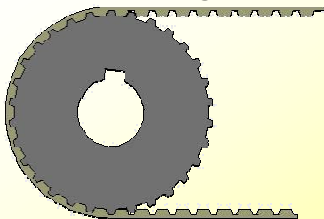
Zero Clearance

## Standard Drive Pulley



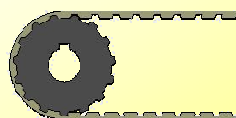
1/64" Clearance

## 30 Tooth Pulley used on RazorGage



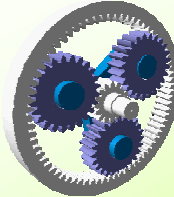
- ◆ Larger Bend Radius increases belt life.
- ◆ Twice the teeth to resist tooth shear load.

## 15 Tooth Pulley Competitor Uses



- ◆ Tight Bend Radius reduces belt life.
- ◆ Half the teeth to resist tooth shear load.

## Planetary Gearhead used on RazorGage



- ◆ 3 Load Paths Transmitting Torque
- ◆ 7 Arc Minutes Backlash

## Spur Gear Style Reducer Others Use



- ◆ 1.2 Gear Teeth Transmitting Load
- ◆ Excessive Backlash

## RazorGage doesn't stretch belts

Due to the nature of the RazorGage drive and control system, motor torque is interrupted immediately upon detection of a stall. The result is that our customers virtually never have to replace a belt.

For detailed information, videos, & manuals, visit [www.razorgage.com](http://www.razorgage.com)

# Better Software

Everyone uses personal computers these days. Why should your linear positioning system be different? RazorGage includes a reliable solid state PC running Windows XP Embedded. Just save files to the RazorGage via network or transfer them with a USB drive.

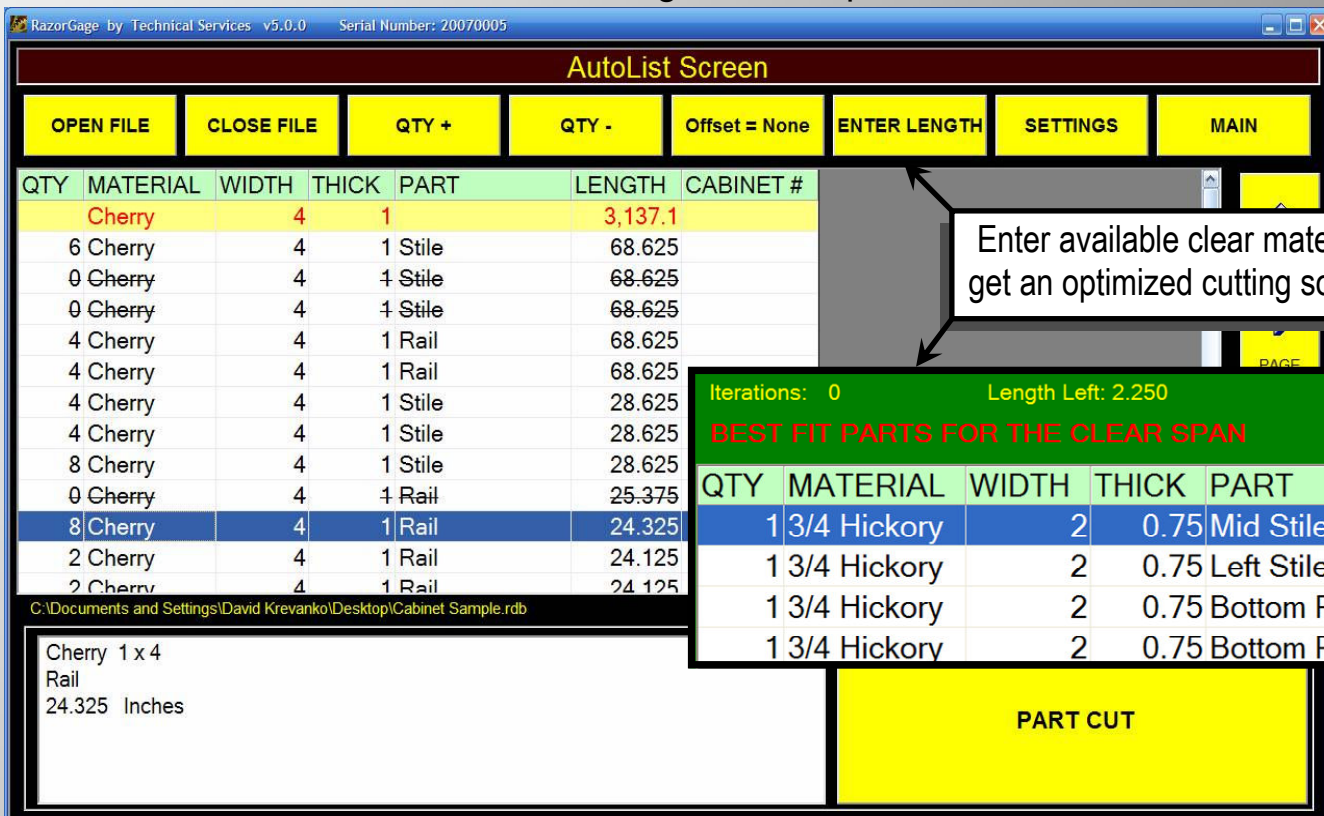
**15" Touch Screen** Provides a bright, bold operator interface.  
**No menus to memorize.** Operation is obvious. Setup and calibration functions are just a keystroke away.  
**Fraction Keys** minimize keystrokes reducing human error. Only 3 strokes initiate a move to a position such as 39 -15/32.



7/16 0.4375	15/32 0.46875	1/2 0.500
11/16 0.6875	23/32 0.71875	3/4 0.750
15/16 0.9375	31/32 0.96875	CLEAR ALL

## Autolist Defecting & Optimizing Option

**Download your cutlist.** The RazorGage Autolist Software displays your parts grouped according to your criteria. Just touch a line item and the RazorGage moves to position. Pressing the PART CUT button decrements QTY. Items are crossed off when the QTY reaches zero. Enter available clear length for an optimized solution.



For detailed information, videos, & manuals, visit [www.razorgage.com](http://www.razorgage.com)

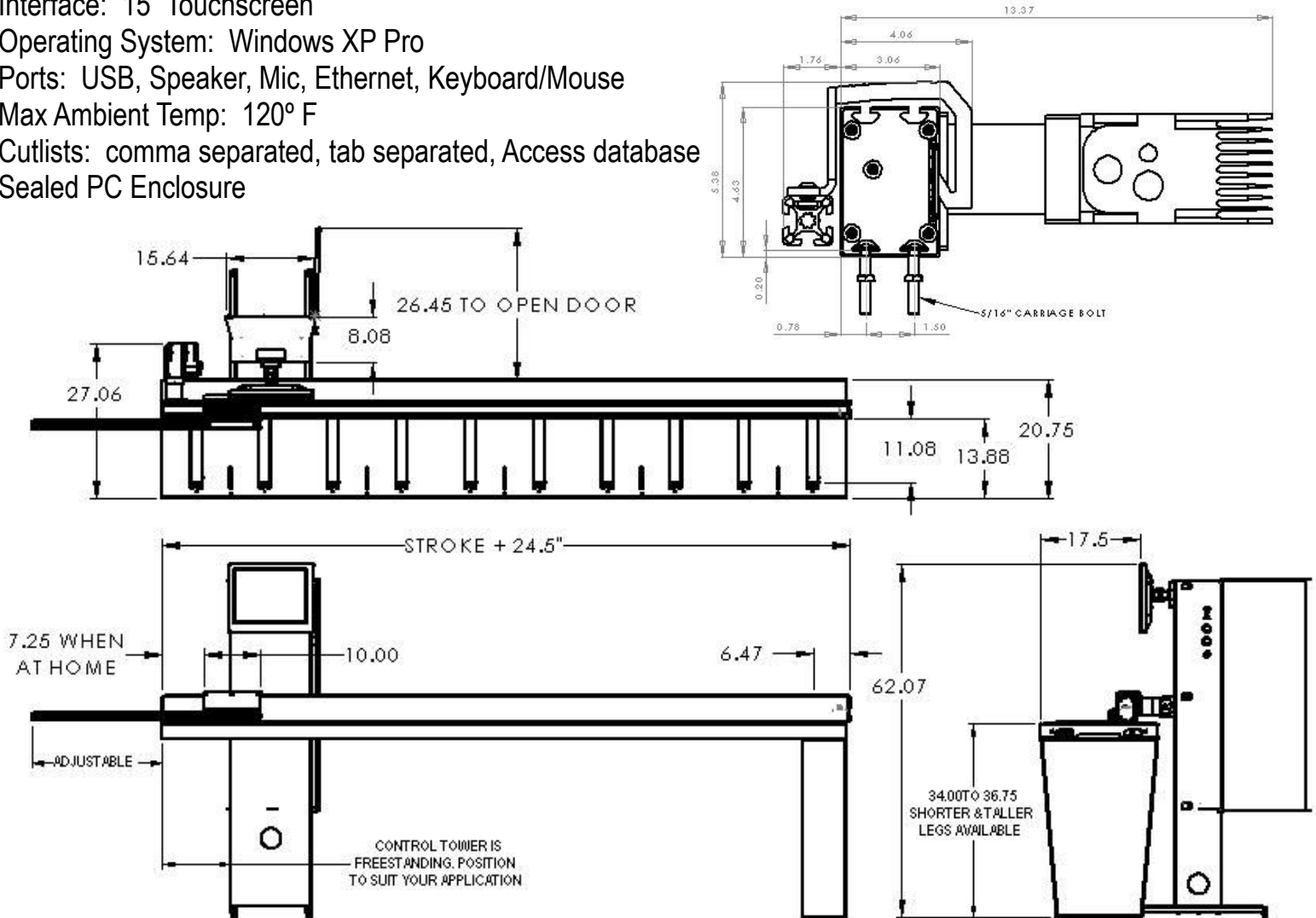
# RAZORGAGE ST

## Specifications

Accuracy:  $\pm 0.005$ " over 12 feet  
Repeatability:  $\pm 0.0015$ "  
Push Force: 200 lb at 10 ips  
Max Load Weight—wood on aluminum: 300lb at 10 ips  
Max Speed: 60 ips  
Power Requirement: 120 VAC / 10 Amps  
Length: Stroke + 24"  
Interface: 15" Touchscreen  
Operating System: Windows XP Pro  
Ports: USB, Speaker, Mic, Ethernet, Keyboard/Mouse  
Max Ambient Temp: 120° F  
Cutlists: comma separated, tab separated, Access database  
Sealed PC Enclosure

## Short List of Accessories

Label Printer  
Inkjet Printer ( Pusher Systems Only)  
Pneumatic Brake  
Linear Encoder  
Steel Facing  
Infeed/Outfeed Table  
Roller Table ( Steel, PVC, Polyurethane)



Your Local Dealer:

RazorGage  
Technical Services, Inc.  
57006 241st Street  
Ames, IA 50010  
P(515) 232-3188 F(515) 232-2953

For detailed information, videos, & manuals, visit [www.razorgage.com](http://www.razorgage.com)